

"THE MATERIAL HEREIN IS FOR INFORMATION PURPOSES ONLY AND IS SUBJECT TO CHANGE WITHOUT NOTICE. DIGITAL EQUIPMENT CORPORATION ASSUMES NO RESPONSIBILITY FOR ANY ERRORS WHICH MAY APPEAR HEREIN."

FIELD MAINTENANCE PRINT SET

"THIS DRAWING AND SPECIFICATIONS, HEREIN, ARE THE PROPERTY OF DIGITAL EQUIPMENT CORPORATION AND SHALL NOT BE REPRODUCED OR COPIED OR USED IN WHOLE OR IN PART AS THE BASIS FOR THE MANUFACTURE OR SALE OF ITEMS WITHOUT WRITTEN PERMISSION. COPYRIGHT © 1982 DIGITAL EQUIPMENT CORPORATION."

TABLE OF CONTENTS

B-TC-LK201-A-1	FIELD MAINTENANCE PRINT SET
B-DD-LK201-A	LK201-A (DRAWING DIRECTORY ONLY)
E-UA-LK201-A-0	UNIT ASSY. LK201-A KEYBOARD
K-PL-LK201-A-DBP	UNIT ASSY. LK201-A KEYBOARD (PL)
B-PL-LK201-A	SHIPPING LIST LK201-A
E-UA-5415148-0-0	ENCODING MODULE ASSY
D-CS-5415148-0-1	ENCODING MODULE (SCHEMATIC)
B-DD-5415148-0	ENCODING MODULE (DRAWING DIRECTORY ONLY)
K-PL-5415148-0-DBP	ENCODING MODULE (PL)
E-IA-5415172-0-DBU	MEMBRANE ASSY, SWITCH ARRAY, LK201 KEYBOARD
K-PL-5415172-0-DBP	MEMBRANE ASSY, SWITCH ARRAY, LK201 KEYBOARD (PL)
D-CS-5415172-0-1	MEMBRANE ASSY, SWITCH ARRAY, LK201 KEYBOARD (SCHEMATIC)
B-DD-5415172-0	MEMBRANE ASSY, SWITCH ARRAY, (DRAWING DIRECTORY ONLY)
A-PA-3700698-0-0	PKG. KEYBOARD LK201-A

UNIT VARIATIONS COVERED BY THIS PRINT SET
LK201-A
LK201-A
LK201-AC
LK201-AD
LK201-AE
LK201-AF
LK201-AG
LK201-AH
LK201-AI
LK201-AJ
LK201-AK
LK201-AL
LK201-AM
LK201-AN
LK201-AP
LK201-AS
LK201-AB
LK201-AZ
LK201-BA
LK201-CA
LK201-CE
LK201-CG
LK201-CP
LK201-BE
LK201-BZ
LK201-AT

LK 201-A - 1
Field Maintenance
Print Set

Digital Equipment
Corporation

Print Set Part Number **MP-** 01395

REV. E
SIZE B
CODE TC
NUMBER LK201-A-1

REVISION HISTORY					DRN.	DATE	TITLE
DATE	ECO NUMBER	REV.	INITIAL	DESCRIPTION			
6-15-82	INITIAL	A			M. Thompson	21 MAY 82	UNIT ASSY (LK201)
11-3-82	LK201-ML002	B			C. Larson	23 June 82	
5-23-83	LK201-MLO06	C			R. Leitermann	23 June 82	
7-22-83	LK201-A-ML007	D			A. Len	23 June 82	
10-27-83	LK201-MLO08	E			B. Welch	23 June 82	
NEXT HIGHER DOC.					B-DD-LK201-A		DOCUMENT NUMBER
							SIZE B CODE TC NUMBER LK201-A-1 REV. E
							SHEET 1 OF 1

DRB 124A

ML 3

"THE MATERIAL HEREIN IS FOR INFORMATION PURPOSES ONLY AND IS SUBJECT TO CHANGE WITHOUT NOTICE. DIGITAL EQUIPMENT CORPORATION ASSUMES NO RESPONSIBILITY FOR ANY ERRORS WHICH MAY APPEAR HEREIN."

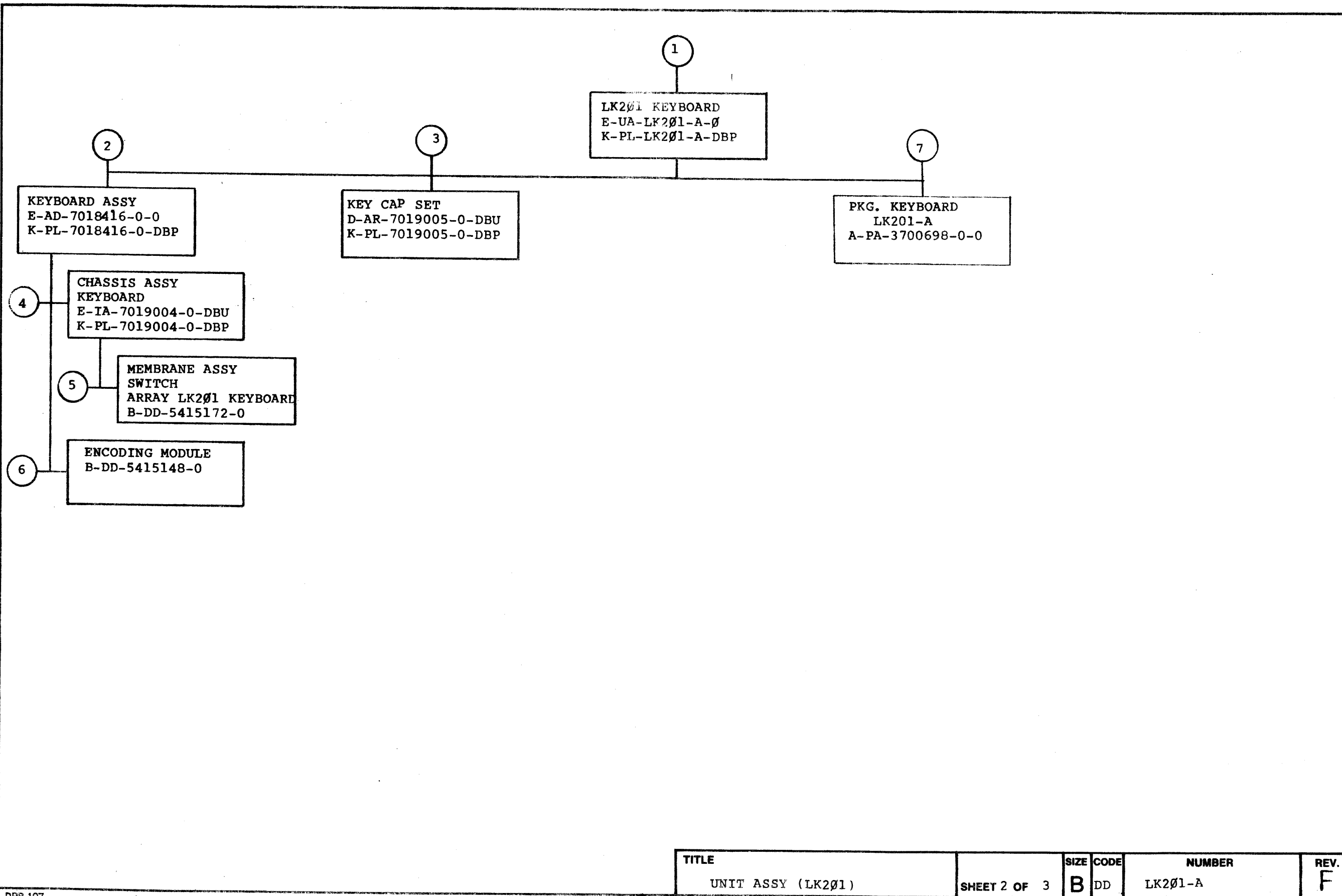
DRAWING DIRECTORY

"THIS DRAWING AND SPECIFICATIONS, HEREIN, ARE THE PROPERTY OF DIGITAL EQUIPMENT CORPORATION AND SHALL NOT BE REPRODUCED OR COPIED OR USED IN WHOLE OR IN PART AS THE BASIS FOR THE MANUFACTURE OR SALE OF ITEMS WITHOUT WRITTEN PERMISSION. COPYRIGHT © 1982 DIGITAL EQUIPMENT CORPORATION."

UNIT VARIATIONS	
VAR	TITLE
LK201-A	LK201 KEYBOARD BASIC UNIT
LK201-AA	LK201 KEYBOARD W/US KEYCAPS
LK201-AC	LK201 KEYBOARD W/CANADA (FRENCH) KEYCAPS
LK201-AD	LK201 KEYBOARD W/DANISH KEYCAPS
LK201-AE	LK201 KEYBOARD W/U.K. KEYCAPS
LK201-AF	LK201 KEYBOARD W/FINNISH KEYCAPS
LK201-AG	LK201 KEYBOARD W/GERMAN KEYCAPS
LK201-AH	LK201 KEYBOARD W/DUTCH KEYCAPS
LK201-AI	LK201 KEYBOARD W/ITALIAN KEYCAPS
LK201-AJ	LK201 KEYBOARD W/KATAKANA KEYCAPS
LK201-AK	LK201 KEYBOARD W/SWISS FRENCH KEYCAPS
LK201-AL	LK201 KEYBOARD W/SWISS GERMAN KEYCAPS
LK201-AM	LK201 KEYBOARD W/SWEDISH KEYCAPS
LK201-AN	LK201 KEYBOARD W/NORWEGIAN KEYCAPS
LK201-AP	LK201 KEYBOARD W/FRENCH KEYCAPS
LK201-AS	LK201 KEYBOARD W/SPANISH KEYCAPS
LK201-AB	LK201 KEYBOARD W/FLEMISH KEYCAPS
LK201-AZ	LK201 KEYBOARD W/U.S. KEYCAPS
LK201-BA	LK201 KEYBOARD W/DECMATE (U.S.) KEYCAPS
LK201-CA	LK201 KEYBOARD (VAX STN.) W/U.S. KEYCAPS
LK201-CE	LK201 KEYBOARD (VAX STN.) W/UK KEYCAPS
LK201-CG	LK201 KEYBOARD (VAX STN.) W/GERMAN KEYCAPS
LK201-CP	LK201 KEYBOARD (VAX STN.) W/FRENCH KEYCAPS
LK201-BE	LK201 KEYBOARD (DECMATE) W/UK KEYCAPS
LK201-BZ	LK201 KEYBOARD (DECMATE) W/US KEYCAPS
LK201-AT	LK201 KEYBOARD W/HEBREW CAPS

REVISIONS	CHK	CHANGE NO.	REV.
	6/5/82	INITIAL	A
11/3/82	LK201-ML002	B	
1/31/83	LK201-ML003	C	
5-2-83	LK201-ML006	D	
7-22-83	LK201-A-ML007	E	
*	LK201-MLO08	F	

USED ON OPTION/MODEL	DRN.	DATE	TITLE	
	M. THOMPSON	21MAY82	digital	
	CHK'D.	DATE	UNIT ASSY. (LK201)	
	PROJ. ENG.	DATE		
	PROD.	DATE	SIZE	CODE
			B	DD
			NUMBER	
			LK 201-A	
			REV	
			F	
			DIST.	

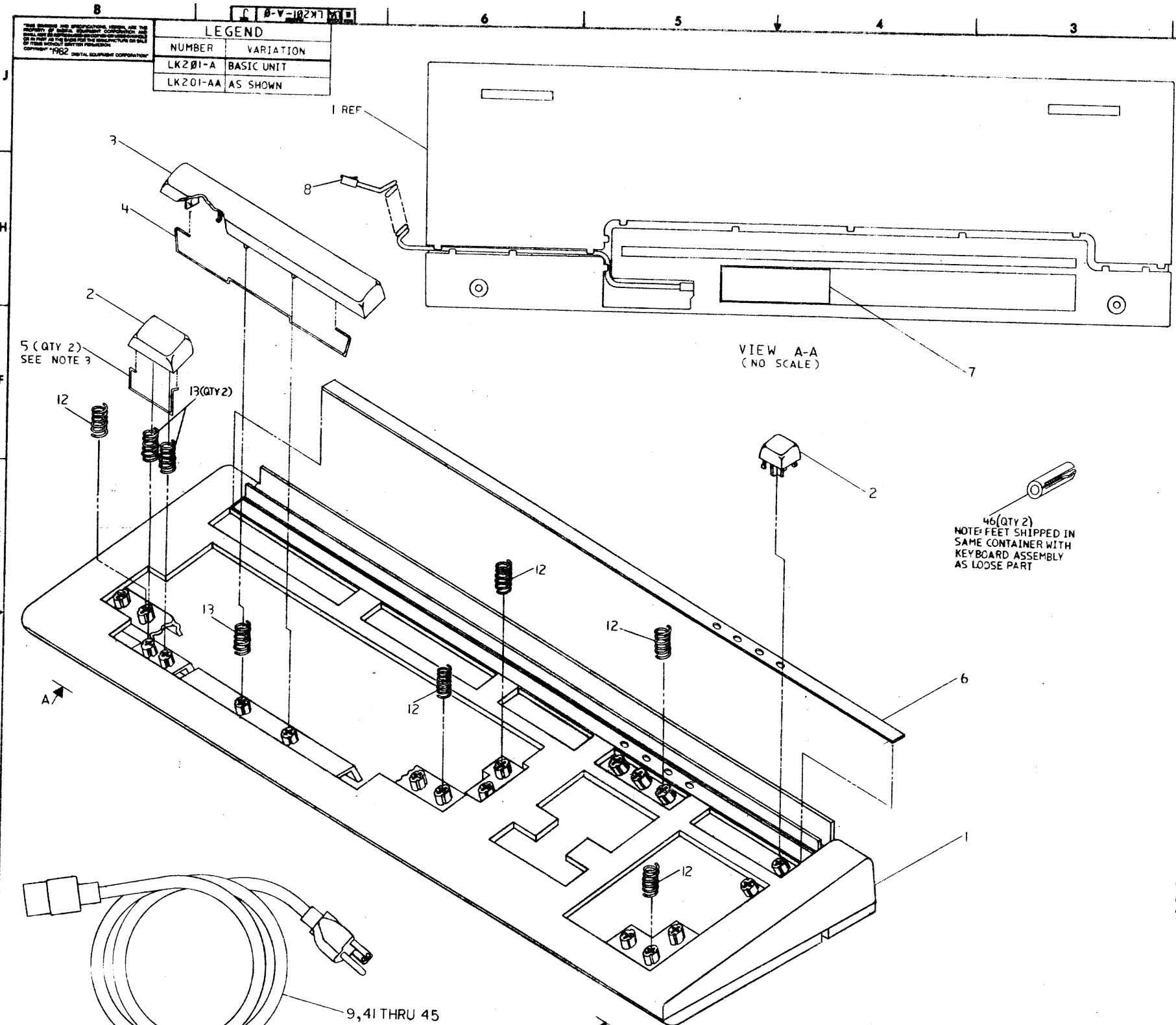


FIND NO.	DRAWING NO.	DESCRIPTION	TYPE	FIND NO.	DRAWING NO.	DESCRIPTION	TYPE
1	MP-01395	LK201 KEYBOARD (MP)	-		D-MD-7426169-0-DBU	KEYSWITCH, HOUSE/GUIDE, 1½ TRIAD	M
	B-TC-LK201-A-1	LK201 KEYBOARD (TC)	-		E-MD-7425488-0-DBU	SPRING, LEAF, ONE POSITION FORMED	M
	E-UA-LK201-A-0	LK201 KEYBOARD	E/M		D-MD-7426703-0-DBU	PAD, NITRILE	M
	K-PL-LK201-A-DBP	LK201 KEYBOARD (PL)	E/M				
	E-MD-7426051-0-DBU	SPACE BAR, LOW PROFILE, LT GREY	M				
	C-MD-7427103-0-DBU	EQUALIZER, SPACEBAR	M				
	B-MD-7426989-0-DBU	BAR, EQUALIZER, DOUBLE KEY	M				
	D-MD-7427577-0-DBU	FOOT, KEYBOARD, SLOPE	M				
2	E-AD-7018416-0-0	KEYBOARD ASSY	E/M	5	B-DD-5415172-0	MEMBRANE, ASSY, SWITCH ARRAY, LK201 KEYBOARD	E/M
	K-PL-7018416-0-DBP	KEYBOARD ASSY	E/M				
	E-MD-7426054-0-DBU	BOTTOM ENCLOSURE, KEYBOARD	M				
	D-MD-7426053-0-DBU	TOP ENCLOSURE, KEYBOARD	M				
	D-MD-7426222-0-DBU	DOOR, KEYBOARD, TRANSPARENT, (2-17)	M				
3	D-AR-7019005-0-DBU	KEYCAP SET, ARRANGEMENT DRAWING	M	6	B-DD-5415148-0	ENCODING MODULE, LK200 KEYBOARD	E/M
4	E-IA-7019004-0-DBU	CHASSIS ASSY, KEYBOARD	E/M	7	A-PA-3700698-0-0	PKG. KEYBOARD LK201-A	M
	K-PL-7019004-0-DBP	CHASSIS ASSY, KEYBOARD	E/M				
	D-MD-7426055-0-DBU	CHASSIS, KEYBOARD	M				
	D-MD-7425992-0-DBU	KEYSWITCH, HOUSING/GUIDE, EXTENDED	M				
	D-MD-7425176-0-DBU	KEYSWITCH, HOUSING/GUIDE	M				
	D-MD-7426052-0-DBU	SWITCH GUIDE, SPACEBAR, LOW PROFILE	M				
	D-MD-7426166-0-DBU	KEYBOARD, HOUSE/GUIDE, RETURN	M				
	D-MD-7426167-0-DBU	KEYSWITCH, HOUSE/GUIDE, ROW 1 DOUBLE	M				
	D-MD-7426168-0-DBU	KEYSWITCH, HOUSE/GUIDE, VERTICAL	M				

TYPE: E ELECTRICAL
M MECHANICAL
E/M ELECTRO/MECHANICAL



TITLE	UNIT ASSY (LK201)	SHEET 3 OF 3	SIZE CODE	B DD	NUMBER	LK201-A	REV.	F
-------	-------------------	--------------	-----------	------	--------	---------	------	---



LEGEND	
NUMBER	VARIATION
LK201-A	BASIC UNIT
LK201-AA	AS SHOWN

- NOTES:
- KEYCAPS ARRANGED ACCORDING TO ARRANGEMENT DRAWING D-AD-7019005-0-DBU.
 - DELETED
 - ITEM 5 IS USED ON SWITCHES A20 A21 & A99 (THE TWO DOUBLE KEYS IN FIRST ROW) ON ARRANGEMENT DRAWING D-AD-7019005-0-DBU.
 - APPLY THIN FILM OF LUBRICANT (ITEM 11) ON PLUNGER AREA OF 5 KEYS PRIOR TO ADDING THEM TO THE KEYBOARD. KEYS IDENTIFIED BY LOCATIONS B99, B11, A23, C13 AND G16 ON KEYCAP ARRANGEMENT DRAWING D-AD-7019005-0-DBU. LUBRICANT MUST BE KEPT OFF VISIBLE (TEXTURED) SURFACES OF KEYS.

CAUTION:
OFF SHEET PARTS LIST EXISTS.
SEE K-PL-LK201-A-DBP.

9, 41 THRU 45
NOTE: POWER CORD SHIPPED
IN SAME CONTAINER
WITH KEYBOARD ASSY
AS A LOOSE PART.

REV	A	RELEASED	ECN 280
REV	B	ARLEN	2 DEC 62
REV	C	ARLEN	2 DEC 62
REV	D	ARLEN	2 DEC 62
REV	E	ARLEN	2 DEC 62
REV	F	ARLEN	2 DEC 62
REV	G	ARLEN	2 DEC 62
REV	H	ARLEN	2 DEC 62
REV	I	ARLEN	2 DEC 62
REV	J	ARLEN	2 DEC 62

DESCRIPTION	DRAWING NO.	PART NO.	REV.
UNLESS OTHERWISE SPECIFIED DIMENSIONS ARE IN INCHES AND THE FOLLOWING TOLERANCES APPLY (PER DEC STD 114)			
INCH TOLERANCES	SURFACE QUALITY	DIMENSION RANGE IN INCHES	
		OVER	UNDER
0.0005	0.0005	0.0005	0.0005
0.0010	0.0010	0.0010	0.0010
0.0015	0.0015	0.0015	0.0015
0.0020	0.0020	0.0020	0.0020
0.0030	0.0030	0.0030	0.0030
0.0040	0.0040	0.0040	0.0040
0.0050	0.0050	0.0050	0.0050
0.0060	0.0060	0.0060	0.0060
0.0070	0.0070	0.0070	0.0070
0.0080	0.0080	0.0080	0.0080
0.0090	0.0090	0.0090	0.0090
0.0100	0.0100	0.0100	0.0100
0.0110	0.0110	0.0110	0.0110
0.0120	0.0120	0.0120	0.0120
0.0130	0.0130	0.0130	0.0130
0.0140	0.0140	0.0140	0.0140
0.0150	0.0150	0.0150	0.0150
0.0160	0.0160	0.0160	0.0160
0.0170	0.0170	0.0170	0.0170
0.0180	0.0180	0.0180	0.0180
0.0190	0.0190	0.0190	0.0190
0.0200	0.0200	0.0200	0.0200
0.0210	0.0210	0.0210	0.0210
0.0220	0.0220	0.0220	0.0220
0.0230	0.0230	0.0230	0.0230
0.0240	0.0240	0.0240	0.0240
0.0250	0.0250	0.0250	0.0250
0.0260	0.0260	0.0260	0.0260
0.0270	0.0270	0.0270	0.0270
0.0280	0.0280	0.0280	0.0280
0.0290	0.0290	0.0290	0.0290
0.0300	0.0300	0.0300	0.0300
0.0310	0.0310	0.0310	0.0310
0.0320	0.0320	0.0320	0.0320
0.0330	0.0330	0.0330	0.0330
0.0340	0.0340	0.0340	0.0340
0.0350	0.0350	0.0350	0.0350
0.0360	0.0360	0.0360	0.0360
0.0370	0.0370	0.0370	0.0370
0.0380	0.0380	0.0380	0.0380
0.0390	0.0390	0.0390	0.0390
0.0400	0.0400	0.0400	0.0400
0.0410	0.0410	0.0410	0.0410
0.0420	0.0420	0.0420	0.0420
0.0430	0.0430	0.0430	0.0430
0.0440	0.0440	0.0440	0.0440
0.0450	0.0450	0.0450	0.0450
0.0460	0.0460	0.0460	0.0460
0.0470	0.0470	0.0470	0.0470
0.0480	0.0480	0.0480	0.0480
0.0490	0.0490	0.0490	0.0490
0.0500	0.0500	0.0500	0.0500
0.0510	0.0510	0.0510	0.0510
0.0520	0.0520	0.0520	0.0520
0.0530	0.0530	0.0530	0.0530
0.0540	0.0540	0.0540	0.0540
0.0550	0.0550	0.0550	0.0550
0.0560	0.0560	0.0560	0.0560
0.0570	0.0570	0.0570	0.0570
0.0580	0.0580	0.0580	0.0580
0.0590	0.0590	0.0590	0.0590
0.0600	0.0600	0.0600	0.0600
0.0610	0.0610	0.0610	0.0610
0.0620	0.0620	0.0620	0.0620
0.0630	0.0630	0.0630	0.0630
0.0640	0.0640	0.0640	0.0640
0.0650	0.0650	0.0650	0.0650
0.0660	0.0660	0.0660	0.0660
0.0670	0.0670	0.0670	0.0670
0.0680	0.0680	0.0680	0.0680
0.0690	0.0690	0.0690	0.0690
0.0700	0.0700	0.0700	0.0700
0.0710	0.0710	0.0710	0.0710
0.0720	0.0720	0.0720	0.0720
0.0730	0.0730	0.0730	0.0730
0.0740	0.0740	0.0740	0.0740
0.0750	0.0750	0.0750	0.0750
0.0760	0.0760	0.0760	0.0760
0.0770	0.0770	0.0770	0.0770
0.0780	0.0780	0.0780	0.0780
0.0790	0.0790	0.0790	0.0790
0.0800	0.0800	0.0800	0.0800
0.0810	0.0810	0.0810	0.0810
0.0820	0.0820	0.0820	0.0820
0.0830	0.0830	0.0830	0.0830
0.0840	0.0840	0.0840	0.0840
0.0850	0.0850	0.0850	0.0850
0.0860	0.0860	0.0860	0.0860
0.0870	0.0870	0.0870	0.0870
0.0880	0.0880	0.0880	0.0880
0.0890	0.0890	0.0890	0.0890
0.0900	0.0900	0.0900	0.0900
0.0910	0.0910	0.0910	0.0910
0.0920	0.0920	0.0920	0.0920
0.0930	0.0930	0.0930	0.0930
0.0940	0.0940	0.0940	0.0940
0.0950	0.0950	0.0950	0.0950
0.0960	0.0960	0.0960	0.0960
0.0970	0.0970	0.0970	0.0970
0.0980	0.0980	0.0980	0.0980
0.0990	0.0990	0.0990	0.0990
0.1000	0.1000	0.1000	0.1000

THIRD ANGLE PROJECTION

DO NOT SCALE DRAWINGS

REMOVE BURRS AND BREAK SHARP CORNERS

MATERIAL: SEE PARTS LIST

DATE: 6-2-62

BY: [Signature]

REV: 1

TITLE: LK201-A KEYBOARD

DOCUMENT NUMBER: E UA LK201-A-0 J

REV: 1

AUTOMATED BY PRTLST.3P(44)

PARTS LIST

SHEET A1 OF A2

LINE	ITEM	TOP DOCUMENT	PART NUMBER	MIN REV	DESCRIPTION	QTY PER VARIATION												
						A	AA	AC	AD	AE	AF	AG	AH	AI	AJ	AK	AL	
1	1	E-AD-7018416-0-0	7018416-00		KEYBOARD ASSY	1	1	1	1	1	1	1	1	1	1	1	1	1
2	2	D-AR-7019005-0-DBU	7019005-00		KEYCAP SET WITH U.S. LEGENDS	-	1	-	-	-	-	-	-	-	-	-	-	-
3	3	E-MD-7426051-0-DBU	7426051-00		SPACE BAR LOW-PROFILE	1	1	1	1	1	1	1	1	1	1	1	1	1
4	4	C-MD-7427103-0-DBU	7427103-01		EQUALIZER, SPACE BAR	1	1	1	1	1	1	1	1	1	1	1	1	1
5	5	B-MD-7426989-0-DBU	7426989-01		BAR, EQUALIZER, DOUBLE KEY	2	2	2	2	2	2	2	2	2	2	2	2	2
6	6		3620219-01		LABEL, KEYBOARD, W/ADH, AMERICAN	-	1	-	-	1	-	-	-	-	-	-	-	-
7	7		3620312-01		LABEL, SERIAL/REGULATORY	1	1	1	1	1	1	1	1	1	1	1	1	1
8	8		1700294-00		CABLE, ASSY, CT150 KEYBOARD	1	1	1	1	1	1	1	1	1	1	1	1	1
9	9		1700083-09		PWR CORD, TERM 3-18 SJT	-	1	1	-	-	-	-	-	-	-	-	-	-
10	10	A-PA-3700698-0-0	3700698-01		PKKG KEYBOARD LK201-A	-	1	1	1	1	1	1	1	1	1	1	1	1
11	11	SEE NOTE	4901569-01		LUBRICANT, SILICONE	A/R	A/R	A/R	A/R	A/R	A/R	A/R	A/R	A/R	A/R	A/R	A/R	A/R
12	12		1220374-01		SPRING, COMPRESSION .4200DX .250	5	5	5	5	5	5	5	5	5	5	3	5	5
13	13		1220374-02		SPRING, COMPRESSION HIGH FORCE	3	3	3	3	3	3	3	3	3	3	-	3	3
14	14	D-AR-7019005-0-DBU	7019005-01		KEYCAP SET W/CAN (FRENCH) LEGEND	-	-	1	-	-	-	-	-	-	-	-	-	-
15	15	D-AR-7019005-0-DBU	7019005-02		KEYCAP SET W/DANISH LEGENDS	-	-	-	1	-	-	-	-	-	-	-	-	-
16	16	D-AR-7019005-0-DBU	7019005-03		KEYCAP SET W/ U.K. LEGENDS	-	-	-	-	1	-	-	-	-	-	-	-	-
17	17	D-AR-7019005-0-DBU	7019005-04		KEYCAP SET W/FINNISH LEGENDS	-	-	-	-	-	1	-	-	-	-	-	-	-
18	18	D-AR-7019005-0-DBU	7019005-05		KEYCAP SET W/GERMAN LEGENDS	-	-	-	-	-	-	1	-	-	-	-	-	-
19	19	D-AR-7019005-0-DBU	7019005-06		KEYCAP SET W/HOLLAND LEGENDS	-	-	-	-	-	-	-	1	-	-	-	-	-
20	20	D-AR-7019005-0-DBU	7019005-07		KEYCAP SET W/ITALIAN LEGENDS	-	-	-	-	-	-	-	-	1	-	-	-	-
21	21	D-AR-7019005-0-DBU	7019005-08		REPLACED BY 7021081-01	-	-	-	-	-	-	-	-	-	-	1	-	-
22	22	D-AR-7019005-0-DBU	7019005-09		KEYCAP SET W/SWISS-FRENCH LEGEND	-	-	-	-	-	-	-	-	-	-	-	-	1
23	23	D-AR-7019005-0-DBU	7019005-10		KEYCAP SET W/SWISS-GERMAN LEGEND	-	-	-	-	-	-	-	-	-	-	-	-	1
24	24	D-AR-7019005-0-DBU	7019005-11		*** THIS ITEM IS NOT USED ***	-	-	-	-	-	-	-	-	-	-	-	-	-
25	25	D-AR-7019005-0-DBU	7019005-12		*** THIS ITEM IS NOT USED ***	-	-	-	-	-	-	-	-	-	-	-	-	-
26	26	D-AR-7019005-0-DBU	7019005-13		*** THIS ITEM IS NOT USED ***	-	-	-	-	-	-	-	-	-	-	-	-	-
27	27	D-AR-7019005-0-DBU	7019005-14		*** THIS ITEM IS NOT USED ***	-	-	-	-	-	-	-	-	-	-	-	-	-
28	28	D-AR-7019005-0-DBU	7019005-15		*** THIS ITEM IS NOT USED ***	-	-	-	-	-	-	-	-	-	-	-	-	-
29	29	D-AR-7019005-0-DBU	7019005-16		*** THIS ITEM IS NOT USED ***	-	-	-	-	-	-	-	-	-	-	-	-	-
30	30	A-PS-3620219-0-0	3620219-02		LABEL, KEYBOARD, W/ADH, AUSTRIAN/GE	-	-	-	-	-	-	1	-	-	-	-	-	1

REVISION HISTORY			BASIC PART NO: LK201		DRN:	D. HEALY	DATE:	18-MAR-82	DIGITAL			
ENG	ECO NUMBER	REV	SECTION A OF C	CHK'D:	C. LARSON	DATE:	19-MAY-82	TITLE PARTS LIST				
	INITIAL	A	SECTION VARIATION INDEX					LK201 KEYBOARD				
AL	LK201-ML001	B	[A]A, AA, AC, AD, AE, AF,									
AL	LK201-ML002	C	AG, AH, AI, AJ, AK, AL									
AL	LK201-ML003	D	[B]AM, AN, AP, AS, AB, AZ,	DES. ENG:	R. LIETERMANN	DATE:	19-MAY-82	DOCUMENT NUMBER				
AL	LK201-A-ML004	E	BA, CA, CE, CG, CP, BE					SIZE	CODE	NUMBER	REV	
AL	LK201-ML006	F	[C]BZ, AT	RESP. ENG.:	A. LEN	DATE:	19-MAY-82	K	PL	LK201-A-DBP	J	
AL	LK201-A-ML007	H	[D]									
AL	LK201-ML008	J	[E]	MFG. ENG.:	L. QUARLES	DATE:	19-MAY-82	RELEASE DATE:				
			[F]	ASSEMBLY NUMBER:		TOP DOCUMENT NUMBER:		FILE NAME:	EDIT #			
				E-UA-LK201-A-0		#B-DD-LK201-A		Z4412J.PLS	6			

"THIS DRAWING AND THE SPECIFICATIONS CONTAINED HEREIN ARE CONFIDENTIAL AND PROPRIETARY. THEY ARE THE PROPERTY OF DIGITAL EQUIPMENT CORPORATION AND SHALL NOT BE REPRODUCED OR COPIED OR USED IN WHOLE OR IN PART AS THE BASIS FOR THE MANUFACTURE OR SALE OF ITEMS WITHOUT WRITTEN PERMISSION. THIS IS AN UNPUBLISHED WORK PROTECTED UNDER THE FEDERAL COPYRIGHT LAWS."

AUTOMATED BY PRTLST.3P(44)

PARTS LIST

SHEET A2 OF A2

LINE	ITEM	TOP DOCUMENT	PART NUMBER	MIN REV	DESCRIPTION	QTY PER VARIATION															
						A	AA	AC	AD	AE	AF	AG	AH	AI	AJ	AK	AL				
31	31	A-PS-3620219-0-0	3620219-03		LABEL,KEYBOARD,W/ADH,DANISH	-	-	-	1	-	-	-	-	-	-	-	-	-	-	-	-
32	32	A-PS-3620219-0-0	3620219-04		LABEL,KEYBOARD,W/ADH,FRENCH	-	-	-	-	-	-	-	-	-	-	-	-	-	-	-	-
33	33	A-PS-3620219-0-0	3620219-05		LABEL,KEYBOARD,W/ADH,FINNISH	-	-	1	-	-	-	-	-	-	-	-	-	-	1	-	-
34	34	A-PS-3620219-0-0	3620219-06		LABEL,KEYBOARD,W/ADH,FINNISH	-	-	-	-	-	-	1	-	-	-	-	-	-	-	-	-
35	35	A-PS-3620219-0-0	3620219-07		LABEL,KEYBOARD,W/ADH,DUTCH	-	-	-	-	-	-	-	-	-	1	1	-	-	-	-	-
36	36	A-PS-3620219-0-0	3620219-08		*** THIS ITEM IS NOT USED ***	-	-	-	-	-	-	-	-	-	-	-	-	-	-	-	-
37	37	A-PS-3620219-0-0	3620219-09		*** THIS ITEM IS NOT USED ***	-	-	-	-	-	-	-	-	-	-	-	-	-	-	-	-
38	38	A-PS-3620219-0-0	3620219-10		*** THIS ITEM IS NOT USED ***	-	-	-	-	-	-	-	-	-	-	-	-	-	-	-	-
39	39	A-PS-3620219-0-0	3620219-11		*** THIS ITEM IS NOT USED ***	-	-	-	-	-	-	-	-	-	-	-	-	-	-	-	-
40	40	A-PS-3620219-0-0	3620219-11		LABEL,KEYBOARD,W/ADH,KATAKANA	-	-	-	-	-	-	-	-	-	-	-	-	-	-	-	-
41	41		3620219-13		*** THIS ITEM IS NOT USED ***	-	-	-	-	-	-	-	-	-	-	-	-	-	1	-	-
42	42		1700209-00		PWR CORD,TERM 3- .75MM 5A 250	-	-	-	-	1	-	-	-	-	-	-	-	-	-	-	-
43	43		1700199-00		PWR CORD,TERM 3 250	-	-	-	-	-	-	1	1	1	-	-	-	-	-	-	-
44	44		1700310-01		PWR CORD,TERM 3- .75MM 250	-	-	-	1	-	-	-	-	-	-	-	-	-	-	-	-
45	45		1700210-00		PWR CORD,TERM 3- .75MM 250V 6	-	-	-	-	-	-	-	-	-	-	-	-	-	-	1	1
46	46	D-MD-7427577-0-DBU	1700198-00		*** THIS ITEM IS NOT USED ***	-	-	-	-	-	-	-	-	-	-	-	-	-	-	-	-
47	47		7427577-01		FOOT,KEYBOARD SLOPE,5 DEGREES	-	2	2	2	2	2	2	2	2	2	2	2	2	2	2	2
48	48	A-PS-3620219-0-0	1700364-01		PWR CORD,TERM 3- .75MM 250V	-	-	-	-	-	-	-	-	-	-	-	-	-	-	-	-
49	49	A-PS-3620219-0-0	3620219-17		*** THIS ITEM IS NOT USED ***	-	-	-	-	-	-	-	-	-	-	-	-	-	1	-	-
50	50		3620219-18		*** THIS ITEM IS NOT USED ***	-	-	-	-	-	-	-	-	-	-	-	-	-	-	-	-
51	51	D-AR-7019005-0-DBU	1700397-01		*** THIS ITEM IS NOT USED ***	-	-	-	-	-	-	-	-	-	-	-	-	-	-	-	-
52	52	D-AR-7019005-0-DBU	7019005-17		*** THIS ITEM IS NOT USED ***	-	-	-	-	-	-	-	-	-	-	-	-	-	-	-	-
53	53	D-AR-7019005-0-DBU	7019005-18		*** THIS ITEM IS NOT USED ***	-	-	-	-	-	-	-	-	-	-	-	-	-	-	-	-
54	54	D-AR-7019005-0-DBU	7019005-19		*** THIS ITEM IS NOT USED ***	-	-	-	-	-	-	-	-	-	-	-	-	-	-	-	-
55	55		7019005-20		*** THIS ITEM IS NOT USED ***	-	-	-	-	-	-	-	-	-	-	-	-	-	-	-	-
56	56		3620312-03		*** THIS ITEM IS NOT USED ***	-	-	-	-	-	-	-	-	-	-	-	-	-	-	-	-
57	57	K-PL-7019005-0-DBP	1700083-26		*** THIS ITEM IS NOT USED ***	-	-	-	-	-	-	-	-	-	-	-	-	-	-	-	-
58	58	D-AR-7019005-0-DBU	7019005-21		KEYCAP SET W/DECMATE UK LEGENDS	0	0	0	0	0	0	0	0	0	0	0	0	0	0	0	0
59	59	A-PS-3620219-0-0	7019005-22		*** THIS ITEM IS NOT USED ***	-	-	-	-	-	-	-	-	-	-	-	-	-	-	-	-
			3620219-19		*** THIS ITEM IS NOT USED ***	-	-	-	-	-	-	-	-	-	-	-	-	-	-	-	-

60 NOTE: QUANTITY OF ITEM #11 IS .0002 GALS.

D	I	G	I	T	A	L	TITLE	SECTION A OF C	SIZE	CODE	DOCUMENT NUMBER	REV
							LK201 KEYBOARD		K	PL	LK201-A-DBP	J

LINE ITEM	TOP DOCUMENT	PART NUMBER	MIN REV	DESCRIPTION	QTY PER VARIATION													
					AM	AN	AP	AS	AB	AZ	BA	CA	CE	CG	CP	BE		
1	1	E-AD-7018416-0-0		7018416-00	KEYBOARD ASSY	1	1	1	1	1	1	1	1	1	1	1	1	1
2	2	D-AR-7019005-0-DBU		7019005-00	KEYCAP SET WITH U.S. LEGENDS	-	-	-	-	-	1	-	-	-	-	-	-	-
3	3	E-MD-7426051-0-DBU		7426051-00	SPACE BAR LOW-PROFILE	1	1	1	1	1	1	1	1	1	1	1	1	1
4	4	C-MD-7427103-0-DBU		7427103-01	EQUALIZER,SPACE BAR	1	1	1	1	1	1	1	1	1	1	1	1	1
5	5	B-MD-7426989-0-DBU		7426989-01	BAR,EQUALIZER,DOUBLE KEY	2	2	2	2	2	2	2	2	2	2	2	2	2
6	6			3620219-01	LABEL,KEYBOARD,W/ADH,AMERICAN	-	-	-	-	-	1	-	-	-	-	-	-	-
7	7			3620312-01	LABEL,SERIAL/REGULATORY	1	1	1	1	1	1	1	-	-	-	-	-	1
8	8			1700294-00	CABLE,ASSY,CT150 KEYBOARD	1	1	1	1	1	1	1	-	-	-	-	-	-
9	9			1700083-09	PWR CORD,TERM 3-18 SJT	-	-	-	-	-	-	-	1	-	-	-	-	-
10	10	A-PA-3700698-0-0		3700698-01	PKKG KEYBOARD LK201-A	1	1	1	1	1	1	1	1	1	1	1	1	1
11	11	SEE NOTE		4901569-01	LUBRICANT,SILICONE	A/R	A/R	A/R	A/R	A/R	A/R	A/R	A/R	A/R	A/R	A/R	A/R	A/R
12	12			1220374-01	SPRING,COMPRESSION .4200DX .250	5	5	5	5	5	5	5	5	5	5	5	5	5
13	13			1220374-02	SPRING,COMPRESSION HIGH FORCE	3	3	3	3	3	3	3	3	3	3	3	3	3
14	14	D-AR-7019005-0-DBU		7019005-01	*** THIS ITEM IS NOT USED ***	-	-	-	-	-	-	-	-	-	-	-	-	-
15	15	D-AR-7019005-0-DBU		7019005-02	*** THIS ITEM IS NOT USED ***	-	-	-	-	-	-	-	-	-	-	-	-	-
16	16	D-AR-7019005-0-DBU		7019005-03	*** THIS ITEM IS NOT USED ***	-	-	-	-	-	-	-	-	-	-	-	-	-
17	17	D-AR-7019005-0-DBU		7019005-04	*** THIS ITEM IS NOT USED ***	-	-	-	-	-	-	-	-	-	-	-	-	-
18	18	D-AR-7019005-0-DBU		7019005-05	*** THIS ITEM IS NOT USED ***	-	-	-	-	-	-	-	-	-	-	-	-	-
19	19	D-AR-7019005-0-DBU		7019005-06	*** THIS ITEM IS NOT USED ***	-	-	-	-	-	-	-	-	-	-	-	-	-
20	20	D-AR-7019005-0-DBU		7019005-07	*** THIS ITEM IS NOT USED ***	-	-	-	-	-	-	-	-	-	-	-	-	-
21	21	D-AR-7019005-0-DBU		7019005-08	*** THIS ITEM IS NOT USED ***	-	-	-	-	-	-	-	-	-	-	-	-	-
22	22	D-AR-7019005-0-DBU		7019005-09	*** THIS ITEM IS NOT USED ***	-	-	-	-	-	-	-	-	-	-	-	-	-
23	23	D-AR-7019005-0-DBU		7019005-10	*** THIS ITEM IS NOT USED ***	-	-	-	-	-	-	-	-	-	-	-	-	-
24	24	D-AR-7019005-0-DBU		7019005-11	KEYCAP SET W/SWEDISH LEGENDS	1	-	-	-	-	-	-	-	-	-	-	-	-
25	25	D-AR-7019005-0-DBU		7019005-12	KEYCAP SET W/NORWEGIAN LEGEND	-	1	-	-	-	-	-	-	-	-	-	-	-
26	26	D-AR-7019005-0-DBU		7019005-13	KEYCAP SET W/FRENCH LEGENDS	-	-	1	-	-	-	-	-	-	-	-	-	-
27	27	D-AR-7019005-0-DBU		7019005-14	KEYCAP SET W/SPAIN LEGENDS	-	-	-	1	-	-	-	-	-	-	-	-	-
28	28	D-AR-7019005-0-DBU		7019005-15	KEYCAP SET W/DECMATE II LEGEND	-	-	-	-	-	-	1	-	-	-	-	-	-
29	29	D-AR-7019005-0-DBU		7019005-16	KEYCAP SET/FLEMISH LEGENDS	-	-	-	-	1	-	-	-	-	-	-	-	-
30	30	A-PS-3620219-0-0		3620219-02	*** THIS ITEM IS NOT USED ***	-	-	-	-	-	-	-	-	-	-	-	-	-

REVISION HISTORY			BASIC PART NO: LK201		DRN: D. HEALY	DATE: 18-MAR-82	D I G I T A L		
ENG!	ECO NUMBER	REV	SECTION B OF C	CHK'D: C. LARSON	DATE: 19-MAY-82	TITLE PARTS LIST LK201 KEYBOARD			
	INITIAL	A	SECTION VARIATION INDEX	DES.ENG: R. LIETERMANN	DATE: 19-MAY-82	DOCUMENT NUMBER			
AL	LK201-ML001	B	[AJA,AA,AC,AD,AE,AF,	RESP.ENG.: A. LEN	DATE: 19-MAY-82	SIZE: K	CODE: PL	NUMBER: LK201-A-DBP	REV: J
AL	LK201-ML002	C	AG,AH,AI,AJ,AK,AL	MFG.ENG.: L. QUARLES	DATE: 19-MAY-82	RELEASE DATE:			
AL	LK201-ML003	D	[BJAM,AN,AP,AS,AB,AZ,	ASSEMBLY NUMBER: E-UA-LK201-A-0	TOP DOCUMENT NUMBER: #B-DD-LK201-A	FILE NAME: Z4412J.PLS		EDIT #: 6	
AL	LK201-A-ML004	E	BA,CA,CE,CG,CP,BE						
AL	LK201-ML006	F	[C]BZ,AT						
AL	LK201-A-ML007	H	[D]						
AL	LK201-ML008	J	[E]						
			[F]						

"THIS DRAWING AND THE SPECIFICATIONS CONTAINED HEREIN ARE CONFIDENTIAL AND PROPRIETARY. THEY ARE THE PROPERTY OF DIGITAL EQUIPMENT CORPORATION AND SHALL NOT BE REPRODUCED OR COPIED OR USED IN WHOLE OR IN PART AS THE BASIS FOR THE MANUFACTURE OR SALE OF ITEMS WITHOUT WRITTEN PERMISSION. THIS IS AN UNPUBLISHED WORK PROTECTED UNDER THE FEDERAL COPYRIGHT LAWS."

AUTOMATED BY PRTLST.3P(44)

PARTS LIST

SHEET B2 OF B2

LINE	ITEM	TOP DOCUMENT	PART NUMBER	MIN REV	DESCRIPTION	VARIATION REVISION LEVEL:															
						AM	AN	AP	AS	AB	AZ	BA	CA	CE	CG	CP	BE				
31	31	A-PS-3620219-0-0	3620219-03		*** THIS ITEM IS NOT USED ***	-	-	-	-	-	-	-	-	-	-	-	-	-	-	-	-
32	32	A-PS-3620219-0-0	3620219-04		LABEL,KEYBOARD,W/ADH,FRENCH	-	-	1	-	-	-	-	-	-	-	-	-	-	-	-	-
33	33	A-PS-3620219-0-0	3620219-05		*** THIS ITEM IS NOT USED ***	-	-	-	-	-	-	-	-	-	-	-	-	-	-	-	-
34	34	A-PS-3620219-0-0	3620219-06		LABEL,KEYBOARD,W/ADH,DUTCH	-	-	-	-	1	-	-	-	-	-	-	-	-	-	-	-
35	35	A-PS-3620219-0-0	3620219-07		*** THIS ITEM IS NOT USED ***	-	-	-	-	-	-	-	-	-	-	-	-	-	-	-	-
36	36	A-PS-3620219-0-0	3620219-08		LABEL,KEYBOARD,W/ADH,SPANISH	-	-	-	1	-	-	-	-	-	-	-	-	-	-	-	-
37	37	A-PS-3620219-0-0	3620219-09		LABEL,KEYBOARD,W/ADH,SWEDISH	1	-	-	-	-	-	-	-	-	-	-	-	-	-	-	-
38	38	A-PS-3620219-0-0	3620219-10		LABEL,KEYBOARD,W/ADH,NORWEIGN	-	1	-	-	-	-	-	-	-	-	-	-	-	-	-	-
39	39	A-PS-3620219-0-0	3620219-11		*** THIS ITEM IS NOT USED ***	-	-	-	-	-	-	-	-	-	-	-	-	-	-	-	-
40	40	A-PS-3620219-0-0	3620219-13		LABEL,KEYBOARD,DECMATE II	-	-	-	-	-	-	1	-	-	-	-	-	-	-	-	-
41	41		1700209-00		PWR CORD,TERM 3-.75MM 5A 250	-	-	-	-	-	-	-	-	-	1	-	-	-	-	-	1
42	42		1700199-00		PWR CORD,TERM 3 250	1	1	1	1	1	-	-	-	-	-	1	-	-	-	-	1
43	43		1700310-01		*** THIS ITEM IS NOT USED ***	-	-	-	-	-	-	-	-	-	-	-	1	1	-	-	-
44	44		1700210-00		*** THIS ITEM IS NOT USED ***	-	-	-	-	-	-	-	-	-	-	-	-	-	-	-	-
45	45		1700198-00		PWR CORD,TERM 3-18 250	-	-	-	-	-	-	1	-	-	-	-	-	-	-	-	-
46	46	D-MD-7427577-0-DBU	7427577-01		FOOT,KEYBOARD SLOPE,5 DEGREES	2	2	2	2	2	-	2	2	2	2	2	2	2	2	2	2
47	47		1700364-01		*** THIS ITEM IS NOT USED ***	-	-	-	-	-	-	-	-	-	-	-	-	-	-	-	-
48	48	A-PS-3620219-0-0	3620219-17		LABEL,KEYBOARD,ENGLISH,VAXSTATIO	-	-	-	-	-	-	-	-	1	1	-	-	-	-	-	-
49	49	A-PS-3620219-0-0	3620219-18		LABEL,KEYBOARD,FOREIGN,VAXSTATIO	-	-	-	-	-	-	-	-	-	-	1	1	-	-	-	-
50	50		1700397-01		CABLE ASSY,COIL CORD 14'LG	-	-	-	-	-	-	-	-	1	1	1	1	-	-	-	-
51	51	D-AR-7019005-0-DBU	7019005-17		REPLACED BY 7021081-01	-	-	-	-	-	-	-	-	1	-	-	-	-	-	-	-
52	52	D-AR-7019005-0-DBU	7019005-18		KEYCAP SET W/VAX UK LEGENDS	-	-	-	-	-	-	-	-	-	1	-	-	-	-	-	-
53	53	D-AR-7019005-0-DBU	7019005-19		KEYCAP SET W/VAX GERMAN LEGENDS	-	-	-	-	-	-	-	-	-	-	1	-	-	-	-	-
54	54	D-AR-7019005-0-DBU	7019005-20		KEYCAP SET W/VAX FRENCH LEGENDS	-	-	-	-	-	-	-	-	-	-	-	1	-	-	-	-
55	55		3620312-03		LABEL,SERIAL/REGULATORY LK201-CA	-	-	-	-	-	-	-	-	1	1	1	1	-	-	-	-
56	56		1700083-26		PWR CORD,TERM 3-18 SJT 125V	-	-	-	-	-	-	-	-	1	-	-	-	-	-	-	-
57	57	K-PL-7019005-0-DBP	7019005-21		KEYCAP SET W/DECMATE UK LEGENDS	0	0	0	0	0	0	0	0	0	0	0	0	0	0	0	0
58	58	D-AR-7019005-0-DBU	7019005-22		*** THIS ITEM IS NOT USED ***	-	-	-	-	-	-	-	-	-	-	-	-	-	-	-	-
59	59	A-PS-3620219-0-0	3620219-19		*** THIS ITEM IS NOT USED ***	-	-	-	-	-	-	-	-	-	-	-	-	-	-	-	-

60 NOTE: QUANTITY OF ITEM #11 IS .0002 GALS.

D I G I T A L	TITLE	LK201 KEYBOARD	SECTION B OF C	SIZE	CODE	DOCUMENT NUMBER	REV
				K	PL	LK201-A-DBP	J

LINE	ITEM	TOP DOCUMENT	PART NUMBER	MIN REV	DESCRIPTION	QTY	PER VARIATION
						BZ	AT
						VARIATION REVISION LEVEL:	
1	1	E-AD-7018416-0-0	7018416-00		KEYBOARD ASSY	1	1
2	2	D-AR-7019005-0-DBU	7019005-00		*** THIS ITEM IS NOT USED ***	-	-
3	3	E-MD-7426051-0-DBU	7426051-00		SPACE BAR LOW-PROFILE	1	1
4	4	C-MD-7427103-0-DBU	7427103-01		EQUALIZER, SPACE BAR	1	1
5	5	B-MD-7426989-0-DBU	7426989-01		BAR, EQUALIZER, DOUBLE KEY	2	2
6	6		3620219-01		*** THIS ITEM IS NOT USED ***	-	-
7	7		3620312-01		LABEL, SERIAL/REGULATORY	1	1
8	8		1700294-00		CABLE, ASSY, CT150 KEYBOARD	1	1
9	9		1700083-09		PWR CORD, TERM 3-18 SJT	125	1
10	10	A-PA-3700698-0-0	3700698-01		PKKG KEYBOARD LK201-A	-	1
11	11	SEE NOTE	4901569-01		LUBRICANT, SILICONE	A/R	A/R
12	12		1220374-01		SPRING, COMPRESSION .42000x .250	5	5
13	13		1220374-02		SPRING, COMPRESSION HIGH FORCE	3	3
14	14	D-AR-7019005-0-DBU	7019005-01		*** THIS ITEM IS NOT USED ***	-	-
15	15	D-AR-7019005-0-DBU	7019005-02		*** THIS ITEM IS NOT USED ***	-	-
16	16	D-AR-7019005-0-DBU	7019005-03		*** THIS ITEM IS NOT USED ***	-	-
17	17	D-AR-7019005-0-DBU	7019005-04		*** THIS ITEM IS NOT USED ***	-	-
18	18	D-AR-7019005-0-DBU	7019005-05		*** THIS ITEM IS NOT USED ***	-	-
19	19	D-AR-7019005-0-DBU	7019005-06		*** THIS ITEM IS NOT USED ***	-	-
20	20	D-AR-7019005-0-DBU	7019005-07		*** THIS ITEM IS NOT USED ***	-	-
21	21	D-AR-7019005-0-DBU	7019005-08		*** THIS ITEM IS NOT USED ***	-	-
22	22	D-AR-7019005-0-DBU	7019005-09		*** THIS ITEM IS NOT USED ***	-	-
23	23	D-AR-7019005-0-DBU	7019005-10		*** THIS ITEM IS NOT USED ***	-	-
24	24	D-AR-7019005-0-DBU	7019005-11		*** THIS ITEM IS NOT USED ***	-	-
25	25	D-AR-7019005-0-DBU	7019005-12		*** THIS ITEM IS NOT USED ***	-	-
26	26	D-AR-7019005-0-DBU	7019005-13		*** THIS ITEM IS NOT USED ***	-	-
27	27	D-AR-7019005-0-DBU	7019005-14		*** THIS ITEM IS NOT USED ***	-	-
28	28	D-AR-7019005-0-DBU	7019005-15		KEYCAP SET W/DECMATE II LEGEND	1	-
29	29	D-AR-7019005-0-DBU	7019005-16		*** THIS ITEM IS NOT USED ***	-	-
30	30	A-PS-3620219-0-0	3620219-02		*** THIS ITEM IS NOT USED ***	-	-

REVISION HISTORY			BASIC PART NO: LK201		DRN: D. HEALY		DATE: 18-MAR-82		D I G I T A L		
ENG	ECO NUMBER	REV	SECTION C OF C	CHK'D:	C. LARSON	DATE:	19-MAY-82	TITLE PARTS LIST			
	INITIAL	A	SECTION VARIATION INDEX	DES. ENG:	R. LIETERMANN <td>DATE:</td> <td>19-MAY-82 <td colspan="4">DOCUMENT NUMBER</td> </td>	DATE:	19-MAY-82 <td colspan="4">DOCUMENT NUMBER</td>	DOCUMENT NUMBER			
AL	LK201-ML001	B	[A]A, AA, AC, AD, AE, AF,	RESP. ENG.:	A. IEN <td>DATE:</td> <td>19-MAY-82 <td>SIZE:</td> <td>CODE:</td> <td>NUMBER</td> <td>REV</td> </td>	DATE:	19-MAY-82 <td>SIZE:</td> <td>CODE:</td> <td>NUMBER</td> <td>REV</td>	SIZE:	CODE:	NUMBER	REV
AL	LK201-ML002	C	AG, AH, AI, AJ, AK, AL	MFG. ENG.:	L. QUARLES <td>DATE:</td> <td>19-MAY-82 <td>K:</td> <td>PL:</td> <td>LK201-A-CSP</td> <td>J</td> </td>	DATE:	19-MAY-82 <td>K:</td> <td>PL:</td> <td>LK201-A-CSP</td> <td>J</td>	K:	PL:	LK201-A-CSP	J
AL	LK201-ML003	D	[B]AM, AN, AP, AS, AB, AZ,	ASSEMBLY NUMBER:	E-UA-LK201-A-0 <td>TOP DOCUMENT NUMBER:</td> <td>#B-DD-LK201-A <td>FILE NAME:</td> <td colspan="3">Z4412J.PLS</td> </td>	TOP DOCUMENT NUMBER:	#B-DD-LK201-A <td>FILE NAME:</td> <td colspan="3">Z4412J.PLS</td>	FILE NAME:	Z4412J.PLS		
AL	LK201-A-ML004	E	BA, CA, CE, CG, CP, BE	RELEASE DATE:							
AL	LK201-ML006	F	[C]BZ, AT	EDIT #:	6						
AL	LK201-A-ML007	H	[D]								
AL	LK201-ML008	J	[E]								
			[F]								

"THIS DRAWING AND THE SPECIFICATIONS CONTAINED HEREIN ARE CONFIDENTIAL AND PROPRIETARY. THEY ARE THE PROPERTY OF DIGITAL EQUIPMENT CORPORATION AND SHALL NOT BE REPRODUCED OR COPIED OR USED IN WHOLE OR IN PART AS THE BASIS FOR THE MANUFACTURE OR SALE OF ITEMS WITHOUT WRITTEN PERMISSION. THIS IS AN UNPUBLISHED WORK PROTECTED UNDER THE FEDERAL COPYRIGHT LAWS."

AUTOMATED BY PRTLST.3P(44)

PARTS LIST

SHEET C2 OF C2

LINE	ITEM	TOP DOCUMENT	PART NUMBER	MIN REV	DESCRIPTION	VARIATION	REVISION LEVEL	QTY	PER	VARIATION
						BZ	AT			
31	31	A-PS-3620219-0-0	3620219-03		*** THIS ITEM IS NOT USED ***	-	-			
32	32	A-PS-3620219-0-0	3620219-04		*** THIS ITEM IS NOT USED ***	-	-			
33	33	A-PS-3620219-0-0	3620219-05		*** THIS ITEM IS NOT USED ***	-	-			
34	34	A-PS-3620219-0-0	3620219-06		*** THIS ITEM IS NOT USED ***	-	-			
35	35	A-PS-3620219-0-0	3620219-07		*** THIS ITEM IS NOT USED ***	-	-			
36	36	A-PS-3620219-0-0	3620219-08		*** THIS ITEM IS NOT USED ***	-	-			
37	37	A-PS-3620219-0-0	3620219-09		*** THIS ITEM IS NOT USED ***	-	-			
38	38	A-PS-3620219-0-0	3620219-10		*** THIS ITEM IS NOT USED ***	-	-			
39	39	A-PS-3620219-0-0	3620219-11		*** THIS ITEM IS NOT USED ***	-	-			
40	40	A-PS-3620219-0-0	3620219-13		*** THIS ITEM IS NOT USED ***	-	-			
41	41		1700209-00		*** THIS ITEM IS NOT USED ***	-	-			
42	42		1700199-00		*** THIS ITEM IS NOT USED ***	-	-			
43	43		1700310-01		*** THIS ITEM IS NOT USED ***	-	-			
44	44		1700210-00		*** THIS ITEM IS NOT USED ***	-	-			
45	45		1700198-00		*** THIS ITEM IS NOT USED ***	-	-			
46	46	D-MD-7427577-0-DBU	7427577-01		*** THIS ITEM IS NOT USED ***	-	-			
47	47		1700364-01		FOOT, KEYBOARD SLOPE .5 DEGREES	-	2			
48	48	A-PS-3620219-0-0	3620219-17		*** THIS ITEM IS NOT USED ***	-	-			
49	49	A-PS-3620219-0-0	3620219-18		*** THIS ITEM IS NOT USED ***	-	-			
50	50		1700357-01		*** THIS ITEM IS NOT USED ***	-	-			
51	51	D-AR-7019005-0-DBU	7019005-17		*** THIS ITEM IS NOT USED ***	-	-			
52	52	D-AR-7019005-0-DBU	7019005-18		*** THIS ITEM IS NOT USED ***	-	-			
53	53	D-AR-7019005-0-DBU	7019005-19		*** THIS ITEM IS NOT USED ***	-	-			
54	54	D-AR-7019005-0-DBU	7019005-20		*** THIS ITEM IS NOT USED ***	-	-			
55	55		3620312-03		*** THIS ITEM IS NOT USED ***	-	-			
56	56		1700083-26		*** THIS ITEM IS NOT USED ***	-	-			
57	57	K-PL-7019005-0-DBP	7019005-21		*** THIS ITEM IS NOT USED ***	-	-			
58	58	D-AR-7019005-0-DBU	7019005-22		KEYCAP SET W/DECMATE JK LEGENDS	0	0			
59	59	A-PS-3620219-0-0	3620219-19		REPLACED BY 7021081-01	-	1			
					LABEL, KEYBOARD, W/ADH, HEBREW	-	1			

60 NOTE: QUANTITY OF ITEM #11 IS 0002 GALS.

D I G I T A L	TITLE	SECTION C OF C	SIZE	CODE	DOCUMENT NUMBER	REV
	LK201 KEYBOARD		K	PL	LK201-A-DBP	J



PARTS LIST

QUANTITY / VARIATION

NOTES:

DRN. P. MOLLE DATE 5-14-82	DES. ENG. R. LEITTMANN DATE 7-1-82	MFG. ENG. L. QUARLES 7-1-82
CHK'D. C. LARSEN DATE 5-21-82	RESP. ENG. ARTHUR LEN DATE 7-1-82	NEXT HIGHER DOC. B-DD-LK201-A

ITEM NO.	DRAWING NO.	PART NO.	DESCRIPTION	QUANTITY / VARIATION												REFERENCE DESIGNATORS	
				LK201-A	LK201-AA	LK201-AC	LK201-AD	LK201-AE	LK201-AF	LK201-AG	LK201-AH	LK201-AI	LK201-AJ	LK201-AK	LK201-AL		
1	E-UA-LK201-A-0	LK201-A	LK201 KEYBOARD	1	-	-	-	-	-	-	-	-	-	-	-	-	-
2	E-UA-LK201-A-0	LK201-AA	LK201A KEYBOARD W/US KEYCAPS	-	1	-	-	-	-	-	-	-	-	-	-	-	-
3	E-UA-LK201-A-0	LK201-AC	LK201 KEYBOARD W/CANADA (FRENCH) KEYCAPS	-	-	1	-	-	-	-	-	-	-	-	-	-	-
4	E-UA-LK201-A-0	LK201-AD	LK201 KEYBOARD W/DANISH KEYCAPS	-	-	-	1	-	-	-	-	-	-	-	-	-	-
5	E-UA-LK201-A-0	LK201-AE	LK201 KEYBOARD W/U.K. KEYCAPS	-	-	-	-	1	-	-	-	-	-	-	-	-	-
6	E-UA-LK201-A-0	LK201-AF	LK201 KEYBOARD W/FINNISH KEYCAPS	-	-	-	-	-	1	-	-	-	-	-	-	-	-
7	E-UA-LK201-A-0	LK201-AG	LK201 KEYBOARD W/GERMAN KEYCAPS	-	-	-	-	-	-	1	-	-	-	-	-	-	-
8	E-UA-LK201-A-0	LK201-AH	LK201 KEYBOARD W/DUTCH KEYCAPS	-	-	-	-	-	-	-	1	-	-	-	-	-	-
9	E-UA-LK201-A-0	LK201-AI	LK201 KEYBOARD W/ITALIAN KEYCAPS	-	-	-	-	-	-	-	-	1	-	-	-	-	-
10	E-UA-LK201-A-0	LK201-AJ	LK201 KEYBOARD W/KATAKANA KEYCAPS	-	-	-	-	-	-	-	-	-	1	-	-	-	-
11	E-UA-LK201-A-0	LK201-AK	LK201 KEYBOARD W/SWISS FRENCH KEYCAPS	-	-	-	-	-	-	-	-	-	-	1	-	-	-
12	E-UA-LK201-A-0	LK201-AL	LK201 KEYBOARD W/SWISS GERMAN KEYCAPS	-	-	-	-	-	-	-	-	-	-	-	-	1	-

ECO NO.
ML002
ML006
ML007
ML008

"THIS DRAWING AND SPECIFICATIONS, HEREIN, ARE THE PROPERTY OF DIGITAL EQUIPMENT CORPORATION AND SHALL NOT BE REPRODUCED OR COPIED OR USED IN WHOLE OR IN PART AS THE BASIS FOR THE MANUFACTURE OR SALE OF ITEMS WITHOUT WRITTEN PERMISSION." COPYRIGHT © 1982 DIGITAL EQUIPMENT CORPORATION	TITLE SHIPPING LIST	ASSY. NO. _____	SIZE B	CODE PL	NUMBER LK201-A	REV. E
		SECTION 1 OF 1	SHEET 1 OF 3			



PARTS LIST

QUANTITY / VARIATION

NOTES:

DRN. P. MOLLE DATE 5-14-82	DES. ENG. R. LEITTERMANN DATE 7-1-82	MFG. ENG. L. QUARLES DATE 7-1-82
CHK'D. C. LARSEN DATE 5-21-82	RESP. ENG. ARTHUR LEN DATE 7-1-82	NEXT HIGHER DOC. D-DD-LK201-A

ITEM NO.	DRAWING NO.	PART NO.	DESCRIPTION	QUANTITY / VARIATION											REFERENCE DESIGNATORS		
				LK201-AM	LK201-AN	LK201-AP	LK201-AS	LK201-AB	LK201-AZ	LK201-BA	LK201-CA	LK201-CE	LK201-CG	LK201-CP			
13	E-UA-LK201-A-0	LK201-AM	LK201 KEYBOARD W/SWEDISH KEYCAPS	1	-	-	-	-	-	-	-	-	-	-	-	-	
14	E-UA-LK201-A-0	LK201-AN	LK201 KEYBOARD W/NORWEGIAN KEYCAPS	-	1	-	-	-	-	-	-	-	-	-	-	-	
15	E-UA-LK201-A-0	LK201-AP	LK201 KEYBOARD W/FRENCH KEYCAPS	-	-	1	-	-	-	-	-	-	-	-	-	-	
16	E-UA-LK201-A-0	LK201-AS	LK201 KEYBOARD W/SPANISH KEYCAPS	-	-	-	1	-	-	-	-	-	-	-	-	-	
17	E-UA-LK201-A-0	LK201-AB	LK201 KEYBOARD W/FLEMISH KEYCAPS	-	-	-	-	1	-	-	-	-	-	-	-	-	
18	E-UA-LK201-A-0	LK201-AZ	LK201 KEYBOARD W/U.S. KEYCAPS	-	-	-	-	-	1	-	-	-	-	-	-	-	
19	E-UA-LK201-A-0	LK201-BA	LK201 KEYBOARD W/DECMATE (U.S.) KEYCAPS	-	-	-	-	-	-	1	-	-	-	-	-	-	
20	E-UA-LK201-A-0	LK201-CA	LK201 KEYBOARD (VAX STATION) W/U.S. KEYCAPS	-	-	-	-	-	-	-	1	-	-	-	-	-	
21	E-UA-LK201-A-0	LK201-CE	LK201 KEYBOARD (VAX STATION) W/UK KEYCAPS	-	-	-	-	-	-	-	-	1	-	-	-	-	
22	E-UA-LK201-A-0	LK201-CG	LK201 KEYBOARD (VAX STATION) W/GERMAN KEYCAPS	-	-	-	-	-	-	-	-	-	1	-	-	-	
23	E-IA-LK201-A-0	LK201-CP	LK201 KEYBOARD (VAX STATION) W/FRENCH KEYCAPS	-	-	-	-	-	-	-	-	-	-	1	-	-	

ECO NO.

"THIS DRAWING AND SPECIFICATIONS, HEREIN, ARE THE PROPERTY OF DIGITAL EQUIPMENT CORPORATION AND SHALL NOT BE REPRODUCED OR COPIED OR USED IN WHOLE OR IN PART AS THE BASIS FOR THE MANUFACTURE OR SALE OF ITEMS WITHOUT WRITTEN PERMISSION. COPYRIGHT © 1982 DIGITAL EQUIPMENT CORPORATION"	TITLE	ASSY. NO.	SIZE	CODE	NUMBER	REV.
	SHIPPING LIST	NONE	B	PL	LK201-A	E
		SECTION OF			SHEET 2 OF 3	

digital**PARTS LIST**

QUANTITY / VARIATION

NOTES:

DRN. P. MOLLE
DATE 5-14-82DES. ENG. R. LEITTEMAN
DATE 7-1-82MFG. ENG. L. QUARTLES
DATE 7-1-82CHK'D. C. LARSEN
DATE 5-21-82RESP. ENG. ARTHUR LEN
DATE 7-1-82NEXT HIGHER DOC.
B-DD-LK201-A

ITEM NO.	DRAWING NO.	PART NO.	DESCRIPTION	LK201-BE	LK201-BZ	LK201-AT	QUANTITY / VARIATION										REFERENCE DESIGNATORS			
24	E-UA-LK201-A-0	LK201-BE	LK201 KEYBOARD (DECMATE II) W/UK KEYCAPS	1	-	-														
25	E-UA-LK201-A-0	LK201-BZ	LK201 KEYBOARD (DECMATE II) W/US KEYCAPE	-	1	-														
26	E-UA-LK201-A-0	LK201-AT	LK201 KEYBOARD WITH HEBREW KEYCAPS	-	-	1														

ECO NO.

"THIS DRAWING AND SPECIFICATIONS, HEREIN, ARE THE PROPERTY OF DIGITAL EQUIPMENT CORPORATION AND SHALL NOT BE REPRODUCED OR COPIED OR USED IN WHOLE OR IN PART AS THE BASIS FOR THE MANUFACTURE OR SALE OF ITEMS WITHOUT WRITTEN PERMISSION.
COPYRIGHT © 1983 DIGITAL EQUIPMENT CORPORATION"

TITLE
SHIPPING LIST

ASSY. NO.

SIZE

CODE

NUMBER

REV.

B**PL**

LK201-A

E

SECTION

OF

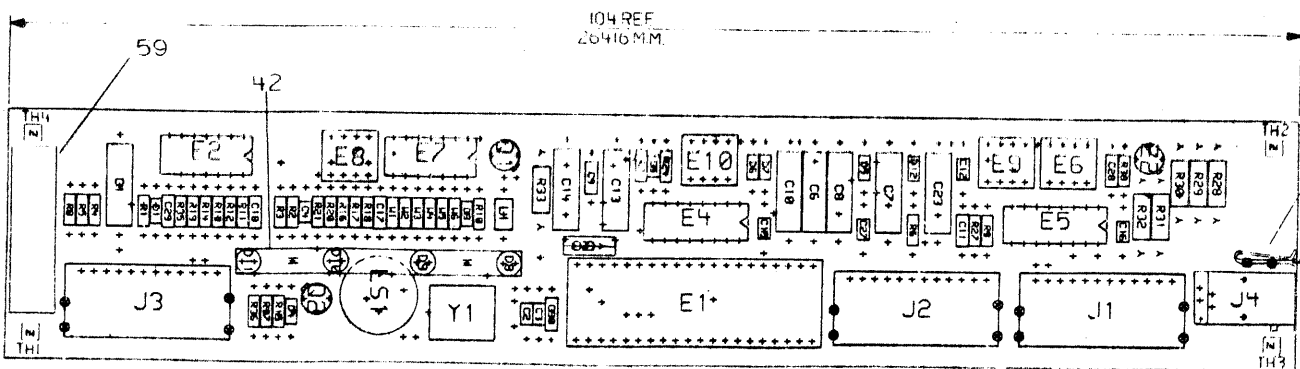
SHEET

3

OF

3

THIS DRAWING AND SPECIFICATIONS, HEREIN, ARE THE PROPERTY OF THE DESIGNER AND SHALL NOT BE REPRODUCED OR COPIED IN ANY MANNER WITHOUT THE WRITTEN PERMISSION OF THE DESIGNER.



NOTES:

STEP	E	+ Y AXIS	STEP	TIMS
REPEAT		+ X AXIS	STEP	TIMS

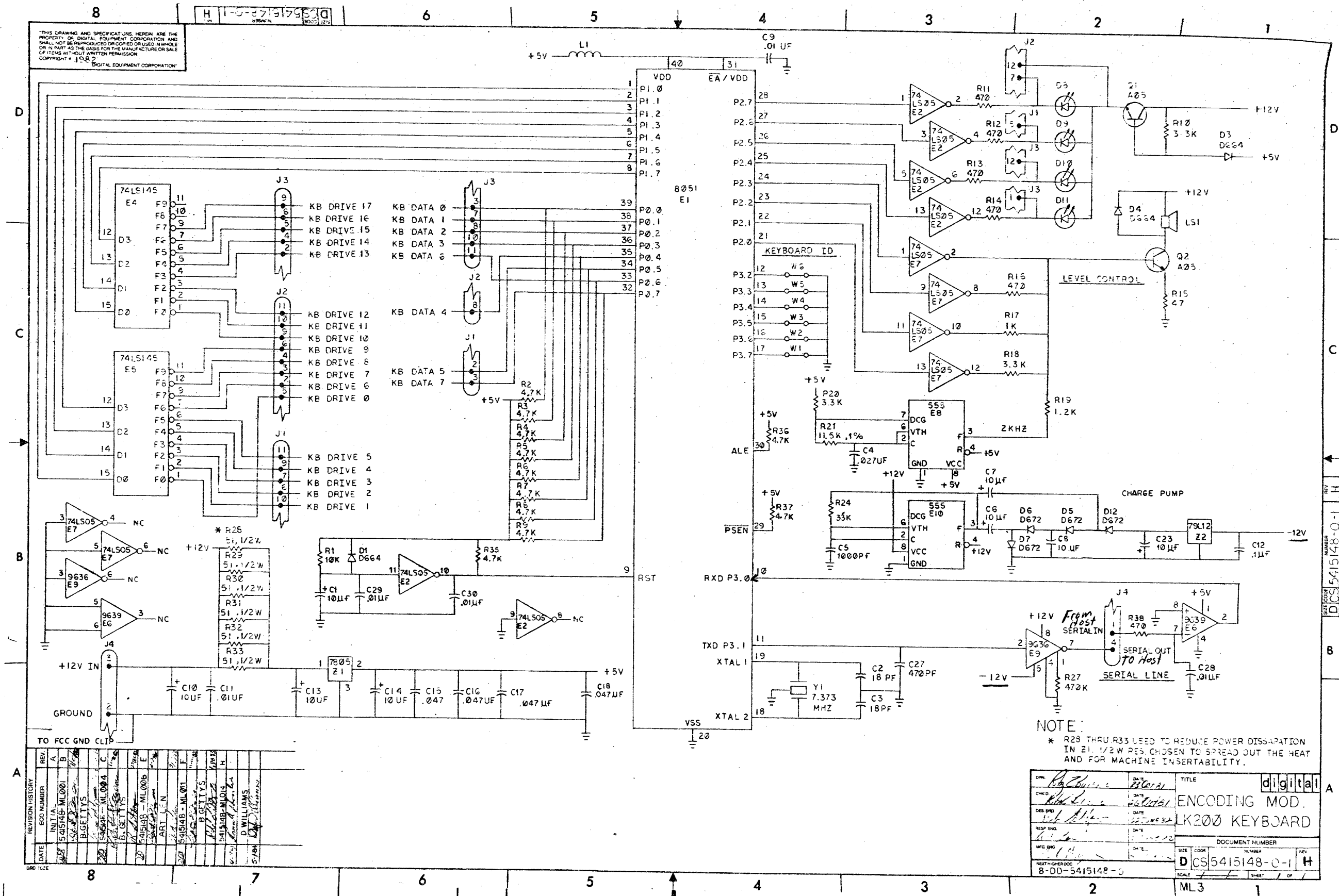
CHG	NO	REV	DATE	BY	CHK
1	1	1			

ETCH REV. P2-P1

SIGNATURES	DATE	digital
CHK. D.		
MECH. ENG.		
PROJ. ENG.		
SCALE		
SHT. 1	OF 1	
NEXT HIGHER ASSY.		

TITLE ENCODING
LK200 KEYBOARD
SIZE CODE E
NUMBER 5415748

THIS DRAWING AND SPECIFICATIONS HEREIN ARE THE PROPERTY OF DIGITAL EQUIPMENT CORPORATION AND SHALL NOT BE REPRODUCED OR COPIED OR USED IN WHOLE OR IN PART AS THE BASIS FOR THE MANUFACTURE OR SALE OF ITEMS WITHOUT WRITTEN PERMISSION.
 COPYRIGHT © 1982
 DIGITAL EQUIPMENT CORPORATION



REV.	INITIALS	DATE	DESCRIPTION
A	BAGETTYS	1/1/82	INITIAL
B	BAGETTYS	1/1/82	REVISED
C	BAGETTYS	1/1/82	REVISED
D	BAGETTYS	1/1/82	REVISED
E	BAGETTYS	1/1/82	REVISED
F	BAGETTYS	1/1/82	REVISED
G	BAGETTYS	1/1/82	REVISED
H	BAGETTYS	1/1/82	REVISED
I	BAGETTYS	1/1/82	REVISED
J	BAGETTYS	1/1/82	REVISED
K	BAGETTYS	1/1/82	REVISED
L	BAGETTYS	1/1/82	REVISED
M	BAGETTYS	1/1/82	REVISED
N	BAGETTYS	1/1/82	REVISED
O	BAGETTYS	1/1/82	REVISED
P	BAGETTYS	1/1/82	REVISED
Q	BAGETTYS	1/1/82	REVISED
R	BAGETTYS	1/1/82	REVISED
S	BAGETTYS	1/1/82	REVISED
T	BAGETTYS	1/1/82	REVISED
U	BAGETTYS	1/1/82	REVISED
V	BAGETTYS	1/1/82	REVISED
W	BAGETTYS	1/1/82	REVISED
X	BAGETTYS	1/1/82	REVISED
Y	BAGETTYS	1/1/82	REVISED
Z	BAGETTYS	1/1/82	REVISED

NOTE:
 * R28 THRU R33 USED TO REDUCE POWER DISSIPATION IN 21.1/2W RES. CHOSEN TO SPREAD OUT THE HEAT AND FOR MACHINE INSERTABILITY.

DATE	1/1/82	TITLE	ENCODING MOD.
DESIGNER	BAGETTYS	DATE	1/1/82
RESP. ENGR.	BAGETTYS	DATE	1/1/82
MFG. ENGR.	BAGETTYS	DATE	1/1/82
NEXT HIGHER DOC.	B-DD-5415148-0	DOCUMENT NUMBER	D CS 5415148-C-1 H

B. REFERENCE DATA (CONTINUED)

ACTUATION OF A SWITCH SHALL OCCUR WHEN A WEIGHT OF 32 GRAMS (1+10/-10) IS APPLIED WITH A .08 DIAMETER HARD SPHERICAL ACTUATOR AT SWITCH CENTER (OR WITHIN .040 OF CENTER). EACH SWITCH SHALL OPERATE CLEANLY AT UP TO 10 HZ ACTUATION FREQUENCY.
 MAXIMUM ALLOWABLE CONTACT BOUNCE 5 MS.
 CAPACITANCE ACROSS ANY OPEN SWITCH 100 PICO FARADS MAXIMUM.
 MINIMUM RESISTANCE BETWEEN LINES 20 MEG OHMS.
 MAXIMUM RESISTANCE ACROSS ANY CLOSED SWITCH WHEN MEASURED AT FLEX TAILS 200 OHMS.
 UNIT MUST MEET ALL OF THE ABOVE CRITERIA WHEN SUBJECTED TO THE FOLLOWING CONDITIONS:
 20 MILLION ACTUATION CYCLES WITH STANDARD SPHERICAL ACTUATOR WITH MAXIMUM ACTUATOR FORCE OF 150 GRAMS.
 STORAGE TEMPERATURES FROM -20°C TO 60°C.
 OPERATING TEMPERATURES FROM -10°C TO 40°C.
 VOLTAGE ACROSS EACH SWITCH 5 VOLTS.
 CURRENT ACROSS EACH SWITCH 2 MA MAXIMUM.
 RELATIVE HUMIDITY 10% TO 90% WITH MAXIMUM WETBULB OF 28°C AND MINIMUM DEWPOINT 2°C.
 FLAMMABILITY: PART SHALL PASS UL94HB APPLICATION TEST WHEN TESTED IN FINAL END USER CONFIGURATION.
 SHELF LIFE: ONE YEAR PACKAGED AT ABOVE TEMPERATURE AND HUMIDITY CONDITIONS WITHOUT DEGRADATION.
 ASSEMBLY LIFE: 10 YEARS IN APPLICATION.

NOTES:

- INTERLAYER BONDING:**
 3 LAYERS TO BE PERMANENTLY BONDED BY MEANS OF A MINIMUM OF 4 TACK WELDS TO BE LOCATED COMPLETELY WITHIN CROSS-HATCHED AREA SHOWN. NO INTERLAYER BONDING ALLOWED OUTSIDE OF CROSS-HATCHED AREA SHOWN.
 BONDING MAY BE VIA HEAT WELDING OR ULTRASONIC WELDING WITHIN REQUIREMENTS OF DETAIL J. BONDS MUST NOT CONTACT ANY CONDUCTIVE TRACE EVEN WITHIN CROSS-HATCHED AREAS.
 BONDS ARE INTENDED TO MAINTAIN ALIGNMENT BETWEEN LAYERS AND NOT FOR SEALING PURPOSES. HOWEVER, BONDS SHOULD EXHIBIT STRENGTH OF THE BASE MATERIAL IN PEEL TEST.
- ALIGNMENT BETWEEN LAYERS:**
 HOLE PATTERNS ON 2 HALVES OF FOLDED MEMBRANE (ITEM 1) AND HOLE PATTERN IN SPACER (ITEM 2) SHOULD BE SUBSTANTIALLY ALIGNED AFTER BONDING SUCH THAT WHEN ASSEMBLY IS RESTRAINED IN FLAT POSITION, A .076 DIAMETER PIN MAY PASS THROUGH EACH OF 280 .100 DIA MOUNTING HOLES WITHOUT CAUSING DEFORMATION OF ANY KIND. THIS IS A MINIMUM REQUIREMENT AND SUBSTANTIALLY BETTER ALIGNMENT BETWEEN HOLE PATTERNS IS A PLUS.
- FOLDS:**
 INSIDE RADIUS OF 4 FOLDS IN ITEM 1 SHOULD BE GREATER THAN .015 INCHES.
- MARKING:**
 PARTS SHOULD BE MARKED IN AREA SHOWN (BY MEANS OF INK STAMP OR LABEL) WITH THE FOLLOWING INFORMATION:
 DIGITAL PART NUMBER AND REVISION LEVEL
 VENDOR SYMBOL, VENDOR LOT NUMBER, AND DATE CODE.
- WORKMANSHIP:**
 ITEM SHALL BE UNIFORM IN QUALITY AND BE FREE FROM DEFECTS. ITEM SHALL CONFORM TO ALL PROVISIONS OF DOCUMENTS DESCRIBING INDIVIDUAL PARTS PRIOR TO THIS ASSEMBLY.
- PACKAGING AND SHIPPING:**
 UNIT SHALL BE SUPPLIED IN SEALED PLASTIC BAG. ITEM SHALL BE PROPERLY PACKAGED FOR PROTECTION AGAINST DAMAGE AND CONTAMINATION DURING HANDLING, TRANSIT AND STORAGE. PACKAGING SHALL BE SULPHUR FREE, LINT FREE AND FREE OF DEBRIS. MINIMUM MARKING DATA ON CONTAINER SHALL INCLUDE VENDOR SYMBOL, DIGITAL PART NUMBER AND REVISION LEVEL, PURCHASE ORDER NUMBER AND QUANTITY.
- QUALITY ASSURANCE PROVISION:**
 ITEMS SUBMITTED SHALL HAVE BEEN INITIALLY APPROVED BY DIGITAL. APPROVAL SHALL BE GIVEN ONLY AFTER SAMPLES REPRESENTATIVE OF THE VENDOR'S NORMAL PRODUCTION RUN HAVE BEEN EXAMINED, TESTED AND FOUND TO MEET THE REQUIREMENTS OF THIS SPEC. NO CHANGES IN MATERIALS OR PROCESS MAY BE MADE WITHOUT REQUALIFICATION BY DIGITAL.
- PERFORMANCE CRITERIA (REFERENCE):**
 THIS ASSEMBLY HAS BEEN DESIGNED TO OPERATE UNDER THE FOLLOWING CONDITIONS AND MEET THE FOLLOWING CRITERIA. WHEN PARTS ARE BUILT TO MEET THE ABOVE SPECIFICATIONS, IT IS DIGITAL'S BELIEF THAT THE FOLLOWING CRITERIA WILL AUTOMATICALLY BE MET. THEREFORE THIS INFORMATION IS PROVIDED FOR REFERENCE ONLY.

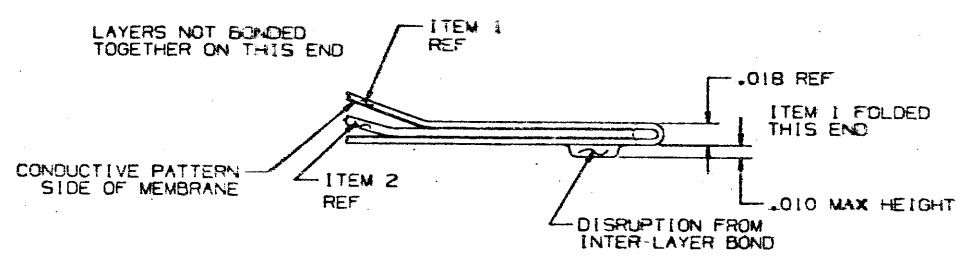
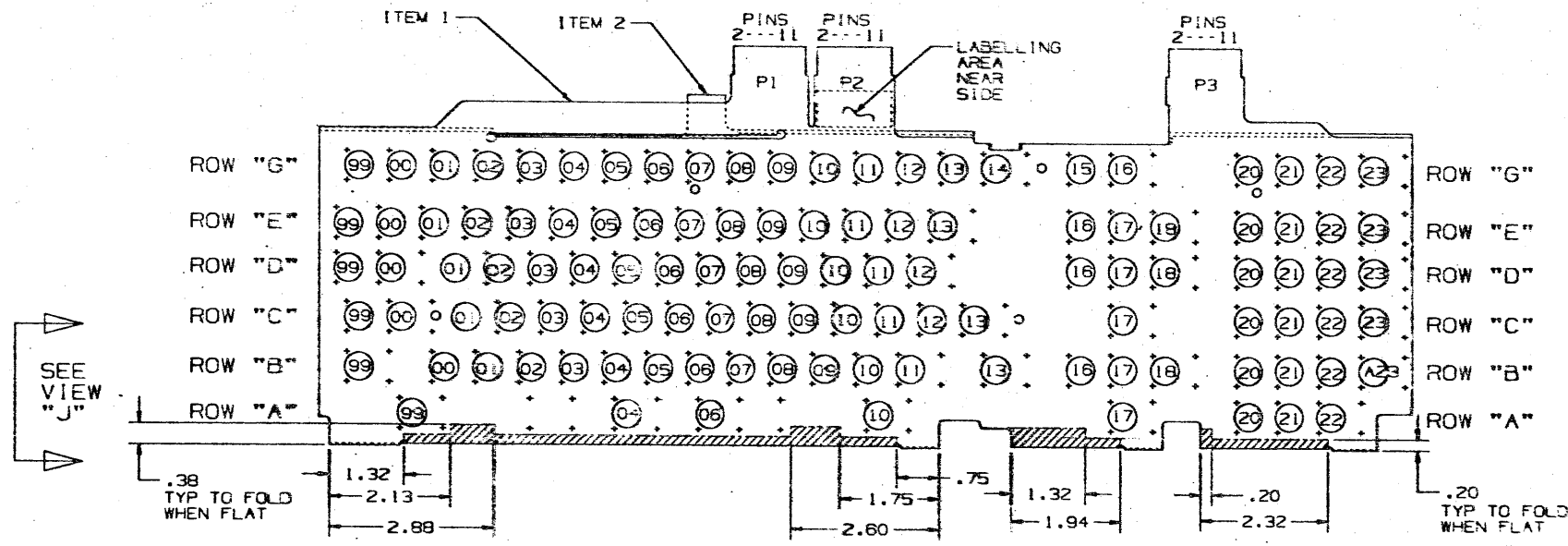
(CONTINUED IN NEXT COLUMN)

DEC CONFIDENTIAL PROPRIETARY INFORMATION

THIS DOCUMENT CONTAINS CONFIDENTIAL PROPRIETARY INFORMATION OF DEC. THIS INFORMATION SHALL NOT BE DISCLOSED TO PERSONS OUTSIDE THE EMPLOY OF DEC, EXCEPT BY DEC PERSONNEL SO AUTHORIZED BY DEC, AND ONLY FOR USE BY SUCH OTHER PERSONS IN THE DESIGN, PRODUCTION, OR MANUFACTURE OF PRODUCTS FOR DEC.

CAUTION: OFF-SHEET PARTS LIST EXISTS
 SEE K-PL-5415172-0-DBP

PLOT LAYER 1 AT SCALE 1/1



REV	DATE	BY	CHKD	DESCRIPTION
A	11/17/82	LEN	LEN	INITIAL
B	11/17/82	LEN	LEN	5415172-0-DBP
C	11/17/82	LEN	LEN	5415172-0-DBP
D	11/17/82	LEN	LEN	5415172-0-DBP
E	11/17/82	LEN	LEN	5415172-0-DBP

DESCRIPTION		DRAWING NO.		PART NO.													
UNLESS OTHERWISE SPECIFIED DIMENSIONS ARE IN INCHES AND THE FOLLOWING TOLERANCES APPLY (PER DEC STD 114)																	
DIMENSION RANGE IN INCHES																	
<table border="1"> <tr> <td>< .015</td> <td>.015 - .030</td> <td>.030 - .060</td> <td>.060 - .125</td> <td>.125 - .250</td> <td>> .250</td> </tr> <tr> <td>±.001</td> <td>±.001</td> <td>±.002</td> <td>±.003</td> <td>±.005</td> <td>±.010</td> </tr> </table>						< .015	.015 - .030	.030 - .060	.060 - .125	.125 - .250	> .250	±.001	±.001	±.002	±.003	±.005	±.010
< .015	.015 - .030	.030 - .060	.060 - .125	.125 - .250	> .250												
±.001	±.001	±.002	±.003	±.005	±.010												
QUANTITY	1	DATE	13 APR 82	TITLE	MEMBRANE ASSY												
BY	LEN	DATE	13 MAY 82	BY	LEN												
CHKD	LEN	DATE	13 MAY 82	CHKD	LEN												
APP'D	LEN	DATE	13 MAY 82	APP'D	LEN												
DATE	13 MAY 82	DATE	13 MAY 82	DATE	13 MAY 82												
BY	LEN	BY	LEN	BY	LEN												
DATE	13 MAY 82	DATE	13 MAY 82	DATE	13 MAY 82												
BY	LEN	BY	LEN	BY	LEN												
DATE	13 MAY 82	DATE	13 MAY 82	DATE	13 MAY 82												
BY	LEN	BY	LEN	BY	LEN												
DATE	13 MAY 82	DATE	13 MAY 82	DATE	13 MAY 82												

LINE	ITEM	TOP DOCUMENT	PART NUMBER	MIN REV	DESCRIPTION	QTY PER VARIATION
1	1	E-MD-5015171-0-DBU	5015171-00		CIRCUIT DRILL & ETCH	1
2	2	E-MD-7426056-0-DBU	7426056-00		SPACER, SWITCH ARRAY, KEYBOARD	1

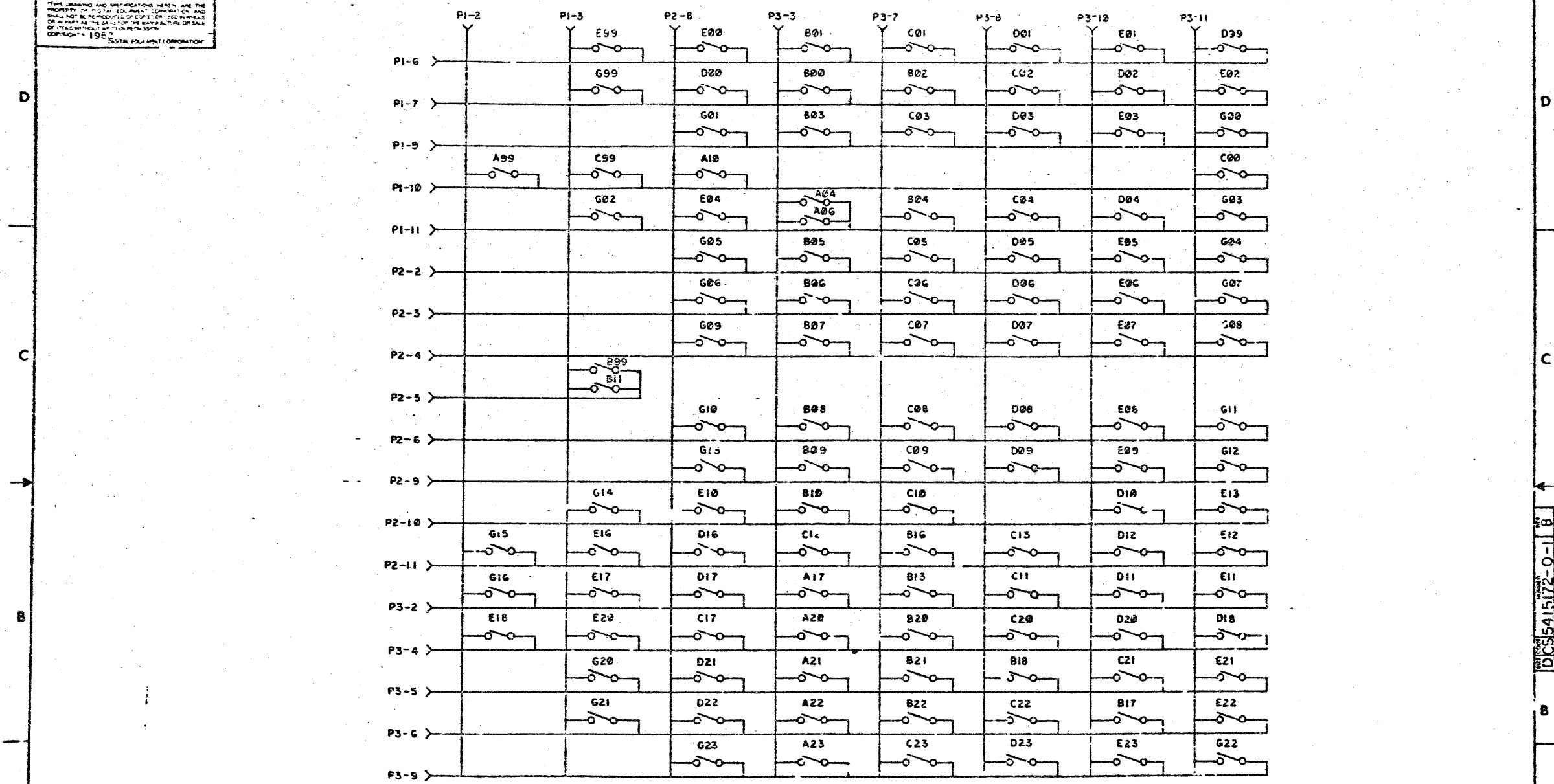
3 NOTE: REV F IS THE MINIMUM ACCEPTABLE REVISION FOR ITEM 1.
 4 NOTE: REV C IS THE MINIMUM ACCEPTABLE REVISION FOR ITEM 2.

REVISION HISTORY			BASIC PART NO: 5415172		DRN: JOHN COTE		DATE: 9-APR-82		DIGITAL		
ENG	ECO NUMBER	REV	SECTION A OF A	CHK'D:	C. LARSEN	DATE:	19-MAY-82	TITLE PARTS LIST			
	INITIAL	A	SECTION VARIATION INDEX					MEMBRANE ASSY. SWITCH ARRAY			
RL	5415172-ML001	B	[A]00					LK201 KEYBOARD			
RL	5415172-ML002	C		DES. ENG:	R. LEITERMANN	DATE:	MAY-82	DOCUMENT NUMBER			
AJ	5415172-ML003	D	[B]					SIZE	CODE	NUMBER	REV
			[C]	RESP. ENG.:	A. LEN	DATE:	19-MAY-82	K	PL	5415172-0-DBP	D
			[D]								
			[E]	MFG. ENG.:	J. FAY	DATE:	19-MAY-82	RELEASE DATE:			
			[F]	ASSEMBLY NUMBER:	E-IA-5415172-0-DBU	TOP DOCUMENT NUMBER:	#B-DD-5415172-0	FILE NAME:	73254D.PLS	EDIT #:	10

"THIS DRAWING AND THE SPECIFICATIONS CONTAINED HEREIN ARE CONFIDENTIAL AND PROPRIETARY. THEY ARE THE PROPERTY OF DIGITAL EQUIPMENT CORPORATION AND SHALL NOT BE REPRODUCED OR COPIED OR USED IN WHOLE OR IN PART AS THE BASIS FOR THE MANUFACTURE OR SALE OF ITEMS WITHOUT WRITTEN PERMISSION. THIS IS AN UNPUBLISHED WORK PROTECTED UNDER THE FEDERAL COPYRIGHT LAWS."

8 6 5 4 3 2 1

THIS DRAWING AND SPECIFICATIONS HERIN ARE THE PROPERTY OF DIGITAL EQUIPMENT CORPORATION AND SHALL NOT BE REPRODUCED OR COPIED OR REDUCED IN ANY MANNER OR BY ANY MEANS FOR THE WHOLE OR PART OF SAID DRAWING WITHOUT THE WRITTEN PERMISSION OF DIGITAL EQUIPMENT CORPORATION
Copyright © 1967



DATE	REV
11/11/67	A
12/11/67	B
1/11/68	C
2/11/68	D
3/11/68	E
4/11/68	F
5/11/68	G
6/11/68	H
7/11/68	I
8/11/68	J
9/11/68	K
10/11/68	L
11/11/68	M
12/11/68	N
1/11/69	O
2/11/69	P
3/11/69	Q
4/11/69	R
5/11/69	S
6/11/69	T
7/11/69	U
8/11/69	V
9/11/69	W
10/11/69	X
11/11/69	Y
12/11/69	Z

DATE	REV	TITLE
7-11-67	A	MEMBRANE ASSY, SW. ARRAY LK201 KEYBD.
12-11-67	B	
1-11-68	C	
2-11-68	D	
3-11-68	E	
4-11-68	F	
5-11-68	G	
6-11-68	H	
7-11-68	I	
8-11-68	J	
9-11-68	K	
10-11-68	L	
11-11-68	M	
12-11-68	N	
1-11-69	O	
2-11-69	P	
3-11-69	Q	
4-11-69	R	
5-11-69	S	
6-11-69	T	
7-11-69	U	
8-11-69	V	
9-11-69	W	
10-11-69	X	
11-11-69	Y	
12-11-69	Z	

8 7 6 5 4 3 2 1 ML3

DRAWING NO.	NO. OF SHTS.	PART NO.	DESCRIPTION	REVISIONS															
				A	B	C	D	E	F	G	H	I	J	K	L	M	N	O	P
		5415172-00	MEMBRANE ASSY SWITCH ARRAY	A	B	C	D1												
			LK201 KEYBOARD																
E-IA-5415172-0-DBU	1		MEMBRANE ASSY SWITCH ARRAY	A	B	C	D												
			LK201 KEYBOARD																
K-PL-5415172-0-DBP	1		MEMBRANE ASSY SWITCH ARRAY	A	B	C	D												
			LK201 KEYBOARD																
D-CS-5415172-0-1	1		MEMBRANE ASSY SWITCH ARRAY	A	A	B	B												
			LK201 KEYBOARD																
K-PC-5415172-0-DBG	-		PC DESIGN DATA BASE	C	D	E	E												
		5015171-00	FLEXCIRCUIT SWITCH ARRAY	C	D	E	F1												
E-MD-5015171-0-DBU	2		FLEXCIRCUIT SWITCH ARRAY	B	C	C	D												
			LK201 KEYBOARD																
E-MD-5015171-0-0	1		FLEXCIRCUIT SWITCH ARRAY	B	C	D	D												
			LK201																
E-MD-54250*6-0-DBU	2		SPACER SWITCH ARRAY	A	B														

NOTES:

REVISIONS		DATE	CHG NO.	REV.	A	B	C	D
		6/15/82	INITIAL					
		10/27/82	MLOO1					
		2/8/83	MLOO2					
		2-9-84	MLOO3					

"THIS DRAWING AND SPECIFICATIONS, HEREIN, ARE THE PROPERTY OF DIGITAL EQUIPMENT CORPORATION AND SHALL NOT BE REPRODUCED OR COPIED OR USED IN WHOLE OR IN PART AS THE BASIS FOR THE MANUFACTURE OR SALE OF ITEMS WITHOUT WRITTEN PERMISSION.
 COPYRIGHT © 1982 DIGITAL EQUIPMENT CORPORATION
 DRB 126



USED ON OPTION/MODEL		DRN.	C. Larsen	3JUN82	TITLE			MEMBRANE ASSY
LK201-A		CHK'D	C. Larsen	21JUN82	SWITCH ARRAY LK201 KEYBOARD			
LK201-AA		ENG.	R. Gettys	14JUN82	SIZE	CODE	NUMBER	REV.
		PROD.	L. Quarles	21JUN82	B	DD	5415172-0	D
					SHEET 1 OF 1			

ML 3